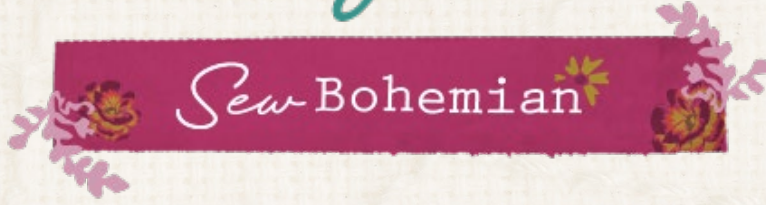




Wandering Nomad





MONTHLY CURATED GROUPS



Sew Bohemian



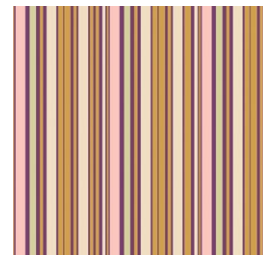
FUS-B-200
ACQUA DI ROSE BOHO



FUS-SD-1103
SHORE REMAINS SPLENDID



SOU-2630
MANDALA HARMONY VIVID



BOH-607
DESTINY ROAD ORCHER



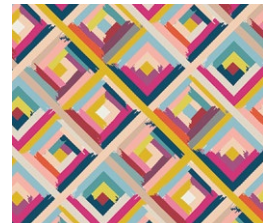
FE-532
HAY



IFL-56309
WHIRL MAUVE



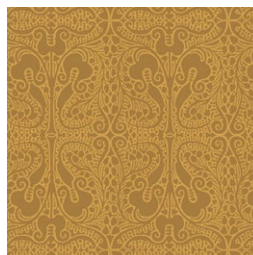
IFL-56302
MEDOW VIVID



FLO-8123
ROADSIDE GUIDES ASTER



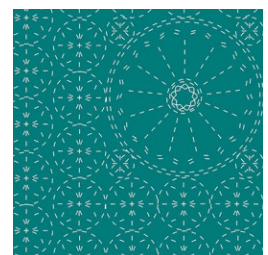
PE-450
GRAPEFRUIT



LAE-1306
ORCHER LACE



FE-533
WINTER WHEAT



WBL-12038
SASHIKO FLORETTE TEAL



Wandering Nomad

FINISHED SIZE | 66" x 66"

FABRIC REQUIREMENTS

Fabric A	FUS-B-200	½ yds.
Fabric B	FUS-SD-1103	2 yds.
Fabric C	SOU-2630	¾ yds.
Fabric D	BOH-603	⅓ yds.
Fabric E	FE-532	⅞ yds.
Fabric F	IFL-56309	½ yds.
Fabric G	IFL-56302	¼ yds.
Fabric H	FLO-8123	½ yds.
Fabric I	PE-450	¼ yds.
Fabric J	LAE-1306	⅞ yds.
Fabric K	FE-533	⅞ yds.
Fabric L	WBL-12038	⅞ yds.

BACKING FABRIC

SOU-2630 4 yds. (Suggested)

BINDING FABRIC

LAE-1306 (Fabric J) (Included)

CUTTING DIRECTIONS

*¼" seam allowances are included.
WOF means width of fabric.*

Fabric A

- Cut nine (9) 7¼ x 7¼ Squares.

Fabric B

- Cut ten (10) 3½ x 6½ rectangles.
- Cut one(1) 7¼ x 7¼ square
- Cut one hundred and twenty four (124) 3⅞ x 3⅞ squares.
- Cut twelve (12) 3½ x 3½ squares.

Fabric C

- Cut four(4) 7¼ x 7¼ squares.

Fabric D

- Cut Fourteen(14) 3½ x 6½ rectangles.

Fabric E

- Cut Three(3) 7¼ x 7¼ squares.
- Cut thirty six (36) 3⅞ x 3⅞ squares.
- Cut eight (8) 3½ x 3½ squares.

Fabric F

- Cut six (6) 7¼ x 7¼ squares.

Fabric G

- Cut five (5) 7¼ x 7¼ squares.

Fabric H

- Cut seven (7) 7¼ x 7¼ squares.

Fabric I

- Cut four(4) 7¼ x 7¼ squares.

Fabric J

- Cut six (6) 7¼ x 7¼ squares.
- Cut six (6) WOF x 1½.

Fabric K

- Cut Seven (7) 7¼ x 7¼ squares.
- Cut Twenty eight (28) 3⅞ x 3⅞ squares.

Fabric L

- Cut eight (8) 3½ x 3½ squares.
- Cut thirty six(36) 3⅞ x 3⅞ squares.
- Cut four (4) 7¼ x 7¼ squares.

CONSTRUCTION

Sew all rights sides together with ¼" seam allowance.

For this project is made out of flying geese and we will be using the Four at a time Flying Geese Method.

Four at a time Flying Geese Method

- Start by placing one 3⅞" square from fabric B on each opposite corner of a 7¼" x 7¼" square from fabric C.
- Draw a diagonal line.
- Sew ¼" on each side of the line and cut through the line.
- Now place another 3⅞ square from fabric B and place it on the right bottom corner.
- Draw a diagonal line on the 3⅞ square from fabric B and sew ¼" on each side of the line.
- Cut through the line, press open, and repeat the same step with the other piece.

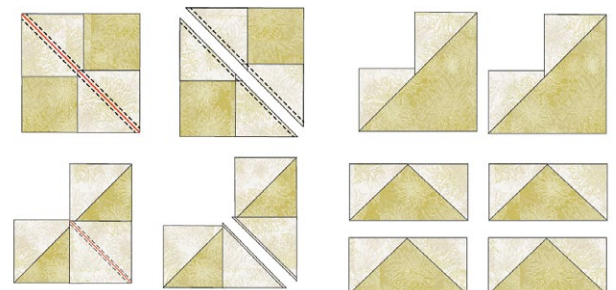


DIAGRAM 1

Because Fabric **D** is a directional , we will be using a regular Flying Geese method.

Flying Geese Method:

- Place a 2½ Square from fabric **L** to the right edge of Fabric **D**, mark a diagonal line and sew through the line, and trim ¼" away from the seam. Press.
- Take another 2½ Square from fabric **L** and now place it to the left edge mark a diagonal line and sew through the line, trim ¼ inch away from the seam and Press.

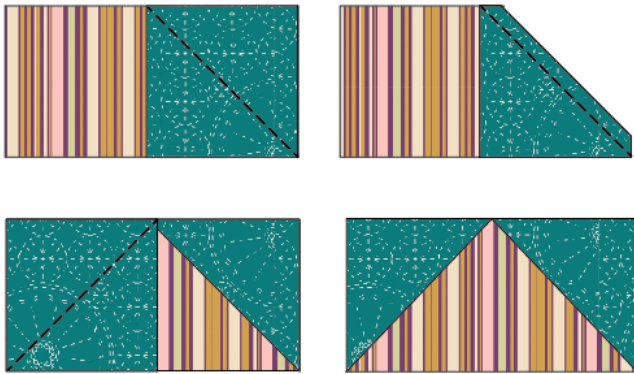


DIAGRAM 3

Pair:

- (8) 3½ X 3½ squares from fabric **L** with (4) 3½ X 6½ rectangles from fabric **D**.
- (8) 3½ X 3½ squares from fabric **E** with (4) 3½ X 6½ rectangles from fabric **D**.
- (12) 3½ X 3½ squares from fabric **L** with (6) 3½ X 6½ rectangles from fabric **D**.

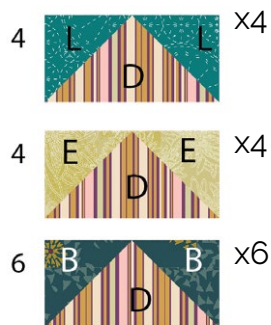


DIAGRAM 4

- Now that we have all our flying geese.
- Arrange them in twenty two (22) rows of 11.
- For fabric placement and attachment please See Diagram 5.



DIAGRAM 5

• Sew rows together

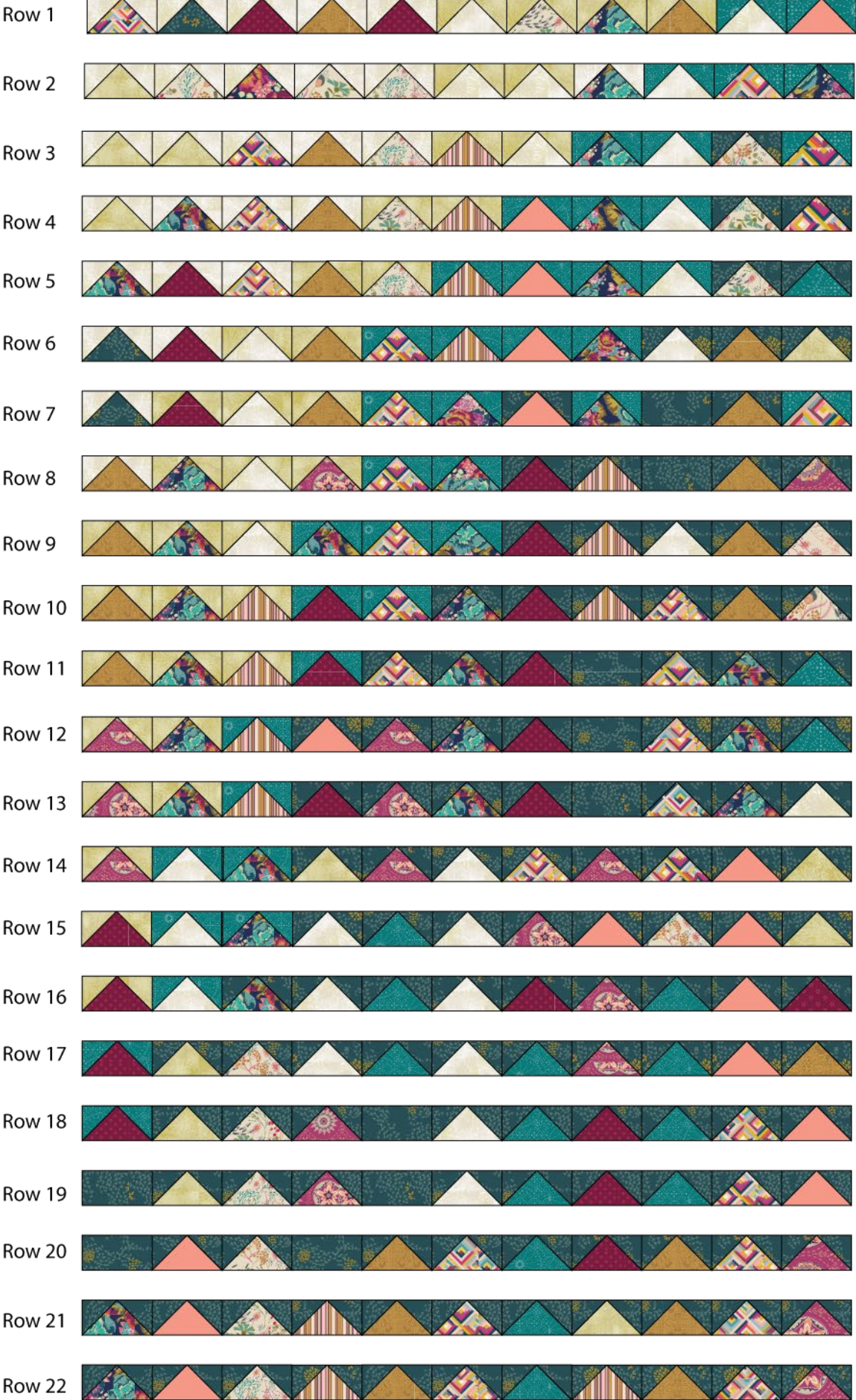


DIAGRAM 6



DIAGRAM 7

QUILT ASSEMBLY

Sew rights sides together

- Place BACKING FABRIC on a large surface wrong side up. Stretch it with masking tape against that surface.
- Place BATTING on top of backing fabric.
- Place TOP on top of the batting with right side facing up. Smooth away wrinkles using your hands.
- Pin all layers together and baste with basting thread, using long stitches. You can also use safety pins to join the layers.
- Machine or hand quilt starting at the center and working towards the corners. Remember that quilting motifs are a matter of personal preference. Have fun choosing yours!
- After you finished, trim excess of any fabric or batting, squaring the quilt to proceed to bind it.

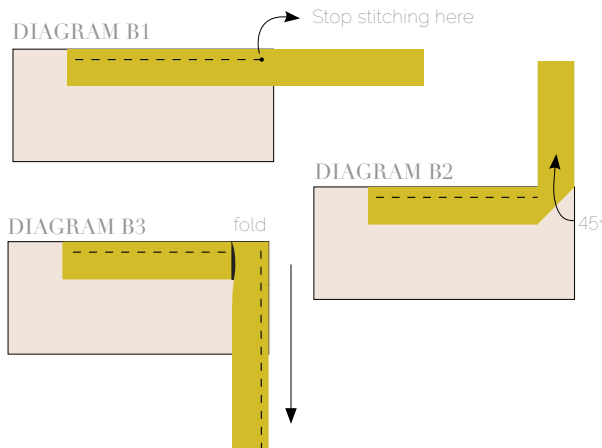
BINDING

Sew rights sides together.

- Cut enough strips 1 ½' wide by the width of the fabric **J** to make a final strip 274 long. Start sewing the binding strip in the middle of one of the sides of the quilt, placing the strip right side down and leaving an approximated 5" tail. Sew with ¼' seam allowance (using straight stitch), aligning the strip's raw edge with the quilt top's raw edge.



- Stop stitching ¼' before the edge of the quilt (DIAGRAM B 1). Clip the threads. Remove the quilt from under the machine presser foot. Fold the strip in a motion of 45° and upward, pressing with your fingers (DIAGRAM B2). Hold this fold with your finger, bring the strip down in line with the next edge, making a horizontal fold that aligns with the top edge of the quilt (DIAGRAM B3). Start sewing at ¼' of the border, stitching all the layers. Do the same in the four corners of the quilt.
- Stop stitching before you reach the last 5 or 6 inches. Cut the threads and remove the quilt from under the machine presser foot. Lay the loose ends of the binding flat along the quilt edge, folding the ends back on themselves where they meet. Press them together to form a crease. Using this crease as the stitching line, sew the two open ends of the binding with right sides together (you can help yourself marking with a pencil if the crease is difficult to see).
- Trim seam to ¼' and press open. Complete the sewing. Turn binding to back of the quilt, turn raw edge inside and stitch by hand using blind stitch.



artgalleryfabrics.com

NOTE: While all possible care has been taken to ensure the accuracy of this pattern, We are not responsible for printing errors or the way in which individual work varies. Please read instructions carefully before starting the construction of this quilt. If desired, wash and iron your fabrics before starting to cut.

© 2020 Courtesy of Art Gallery Quilts LLC. All Rights Reserved.